

COMPLEXUL MUZEAL NAȚIONAL „MOLDOVA” IAȘI  
MUZEUL DE ISTORIE A MOLDOVEI

**CERCETĂRI ISTORICE**  
**(SERIE NOUĂ)**

**XXXIII**  
**2014**

IAȘI  
2014

## COMITETUL DE REDACȚIE

Lăcrămioara STRATULAT (redactor șef)

Senica ȚURCANU

Sorin IFTIMI

Tamilia-Elena MARIN

Ioan IAȚCU

Zamfira PUNGĂ

Măriuca-Diana VORNICU (secretar de redacție)

Adriana MIRON (secretar de redacție)

### **Traduceri revizuite/realizate**

Simona POSTOLACHE

### **Tehnoredactare**

Loredana SOLCAN

### **Grafică copertă**

Cătălin HRIBAN

### **Adresa redacției**

Complexul Muzeal Național „Moldova” Iași

Muzeul de Istorie a Moldovei

Piața Ștefan cel Mare și Sfânt, nr. 1

Iași, RO-700028

Telefon/Fax: 040232218383

e-mail: cercetari.istorice@yahoo.com

ISSN 1453-3960

EDITURA PALATUL CULTURII

Iași

**SUMAR**  
**SOMMAIRE – CONTENTS – INHALT**

<b>ABREVIERI – Abbreviations – Abreviations – Abkürzungen.....</b>	<b>5</b>
Julia BRAUNGART, <b>The Music-Note Linear Pottery Culture in Eastern Romania: Proposal for a Relative Chronology/ <i>Cultura ceramicii liniare cu capete de note muzicale în estul României: propunere pentru o cronologie relativă.....</i></b>	<b>9</b>
Vasile DIACONU, Ioan MITREA, <b>Mărturii arheologice provenite din două așezări ale dacilor liberi aflate în zona subcarpatică a Neamțului/ <i>Archaeological Testimonies Coming from Two Settlements of the Free Dacians in the Subcarpathian Area of Neamț County.....</i></b>	<b>43</b>
Tudor-Radu TIRON, Lucian-Valeriu LEFTER, <b>The Feudal Ceremony of Colomeea/Kołomyja (september 12<sup>th</sup> 1485). Notes on the Moldavian Heraldry and Vexillology during the Reign of Prince Stephen the Great/ <i>Ceremonia feudală de la Colomeea/Kolomyja (12 septembrie 1485). Note asupra heraldicii și vexilologiei moldovenești în timpul domniei lui Ștefan cel Mare.....</i></b>	<b>57</b>
Rodica POPOVICI, Lucia-Minodora MĂȚĂ, <b>Stove Tiles Ornamented with less Known Decorative Motifs: the Lion, the Dragon and the Knight/ <i>Cable ornamentate cu motive decorative mai puțin cunoscute: leul, dragonul și cavalerul.....</i></b>	<b>79</b>
Violeta-Anca EPURE, <b>Organizare bisericească, credințe, superstiții și obiceiuri în Principatele Române în viziunea consulilor și călătorilor francezi prepașoptiști/ <i>L'organisation de l'église, les croyances, les superstitions et les coutumes dans les Principautés Roumaines dans la vision des consuls et des voyageurs français avant la révolution de 1848.....</i></b>	<b>101</b>
Manole BRIHUNEȚ, <b>Distribuirea locurilor de cimitir la începutul secolului al XIX-lea: Iași, Chișinău și București/ <i>The Distribution of Cemetery Sites in the Early 19<sup>th</sup> Century: Iași, Chișinău and București.....</i></b>	<b>125</b>

Sorin IFTIMI, <b>Anton Kauffman, un pictor vienez în Țările Române (1840-1845)</b> / <i>Anton Kauffman, a Viennese Painter in the Romanian Countries (1840-1845)</i> .....	137
Liliana CONDRATICOVA, <b>Arta metalului în a doua jumătate a secolului al XIX-lea: meșteri, ateliere, obiecte din metale prețioase și comune</b> / <i>The Art of Metal during the Second Half of the 19<sup>th</sup> Century: Artisans, Objects Made of Precious and Common Metals</i> .....	177
Sebastian-Dragoș BUNGHEZ, <b>Parlamentul și politica externă a României în ajunul Primului Război Mondial (februarie-iunie 1914)</b> / <i>Romania's Parliament and Foreign Policy in the Eve of the First World War (February-June 1914)</i> .....	191
Narcis Dorin ION, <b>Familia Berindei. Portretul unor aristocrați ai spiritului. Convorbiri cu academicianul Dan Berindei</b> / <i>The Berindei Family. The Portrait of some Aristocrats of the Spirit. Interviews with the Academician Dan Berindei</i> .....	213

#### Recenzii. Note de lectură (Book Reviews)

Constantin PREOTEASA, Ciprian-Dorin NICOLA (eds.), <i>L'impact anthropique sur l'environnement durant le néo-énéolithique du sud-est de l'Europe // In honorem Dr. Gheorghe Dumitroaia</i> , Bibliotheca Memoriae Antiquitatis, XXXI, Piatra-Neamț, 2014, 314 p. (Vasile DIACONU).....	283
Sławomir Kadrow (ed.), with the editorial cooperation of Elżbieta Trela-Kieferling, <i>Bilcze Złote. Materials of the Tripolye Culture from the Werteba and the Ogród Sites</i> , Biblioteka Muzeum Archeologicznego w Krakowie, tom V, Cracovia, 2013, 324 p. (Loredana SOLCAN).....	286
Mirela VERNESCU, <i>Bărăganul în preistorie (circa 3500-1200 a. Chr.). Perioada de tranziție de la eneolitic la epoca bronzului și epoca bronzului</i> , Editura Istros, Brăila, 2013, 304 p. (Vasile DIACONU).....	290
Radu Ota, <i>De la canabele legiunii a XIII-a Gemina la municipium Septimium Apulense</i> , Editura Altip, Alba Iulia, 2012, 255 p. (Ioan OPREA).....	294

## ABREVIERI

### ABBREVIATIONS - ABREVIATIONS - ABKURZUNGEN

- AAC - *Acta Archaeologica Carpathica*, Polska Akademia Nauk, Oddział w Krakowie, Komisja Archeologiczna, Krakowie.
- AARMSI - *Analele Academiei Române. Memoriile Secțiunii Istorice*, București.
- AIIAI/AIIX - *Anuarul Institutului de Istorie și Arheologie Iași/Anuarul Institutului de Istorie „A. D. Xenopol”*, Iași.
- Albina Românească - *Albina Românească. Gazetă administrativă și politico-literară*, Iași.
- AMM - *Acta Moldaviae Meridionalis*, Anuarul Muzeului Județean „Ștefan cel Mare”, Vaslui.
- AMMSS - *Acta Musei Moraviae – Scientiae Sociales*, Moravian Museum, Brno.
- AMN - *Acta Musei Napocensis*, Muzeul Național de Istorie a Transilvaniei, Cluj-Napoca.
- AMNP.A - *Acta Musei Nationalis Pragae. Řada A, Historie*, Národní Muzeum, Praha.
- AMT - *Acta Musei Tutovensis*, Muzeul „Vasile Pârvan”, Bârlad.
- ANIC - Arhivele Naționale Istorice Centrale, București.
- ANRM - Arhiva Națională a Republicii Moldova, Chișinău.
- AP - *Analele Putnei*, Centrul de cercetare și documentare „Ștefan cel Mare”, Mănăstirea Putna.
- ArhGen - *Arhiva Genealogică*, Academia Română. Comisia de Heraldică, Genealogie și Sigilografie, Iași.

ArhMold	- <i>Arheologia Moldovei</i> , Academia Română. Institutul de Arheologie Iași.
AȘUI	- <i>Analele Științifice ale Universității „A. I. Cuza” din Iași</i> , Iași.
BAR Int. Ser.	- <i>British Archaeological Reports. International Series</i> , Oxford.
BCMI	- <i>Buletinul Comisiunii Monumentelor Istorice</i> , București.
Carpica	- <i>Carpica</i> , Muzeul Județean de Istorie „Iulian Antonescu”, Bacău.
CCAR	- <i>Cronica cercetărilor arheologice din România</i> , CIMEC, București.
CercIst S. N.	- <i>Cercetări Istorice</i> (serie nouă), Muzeul de Istorie a Moldovei, Iași.
DIR	- <i>Documente privind istoria României</i> , seria A, Moldova; seria B, Țara Românească, București.
DRH	- <i>Documenta Romaniae Historica</i> , seria A, Moldova; seria B, Țara Românească, București.
Hierasus	- <i>Hierasus. Anuarul Muzeului Județean Botoșani</i> , Muzeul Județean Botoșani.
MCA	- <i>Materiale și Cercetări Arheologice</i> , București.
MemAntiq	- <i>Memoria Antiquitatis, Acta Musei Petrodavensis</i> , Muzeul de Istorie și Arheologie Piatra-Neamț.
MIA	- <i>Materialy i issledovanija po arheologii SSSR</i> , Moscova-Leningrad.
Monumentul	- <i>Monumentul - Tradiție și Viitor</i> , lucrările Simpozionului Național Monumentul - Tradiție și Viitor, Iași.
Památky archeologické	- <i>Památky archeologické</i> , Archeologický ústav Akademie věd České republiky, Praha.
Pontica	- <i>Pontica</i> , Muzeul de Istorie Națională și Arheologie Constanța.
Peuce	- <i>Peuce</i> , Institutul de Cercetări Eco-Muzeale Tulcea.

- PZ - *Praehistorische Zeitschrift*, Freie Universität, Institut für Prähistorische Archäologie, Berlin.
- RÉSEE - *Revue des Études Sud-Est Européenes*, Institutul de Studii Sud-Est Europene, București.
- RI - *Revista Istorică*, Institutul de Istorie „Nicolae Iorga”, București.
- RIR - *Revista istorică română*, București.
- RMMMIA - *Revista Muzeelor și Monumentelor. Monumente Istorice și de Artă*, București.
- RRH - *Revue roumaine d'histoire*, București.
- SASTUMA - *Saarbrücker Studien und Materialien zur Altertumskunde*, Bonn.
- SCIA - *Studii și cercetări de istoria artei. Seria Artă plastică*, București.
- SCIV(A) - *Studii și cercetări de istorie veche (și arheologie)*, Institutul de Arheologie „Vasile Pârvan”, București.
- SCN - *Studii și Cercetări de Numismatică*, Institutul de Arheologie „Vasile Pârvan”, București.
- SlovArch - *Slovenská archeológia*, Slovenská akadémia vied, Bratislava.
- Suceava - *Suceava, Anuarul Muzeului Bucovinei*, Suceava.
- Tyragetia - *Tyragetia*, Muzeul Național de Arheologie și Istorie a Moldovei, Chișinău.
- UISPP - Union Internationale des Sciences Préhistoriques et Protohistoriques.

# THE MUSIC-NOTE LINEAR POTTERY CULTURE IN EASTERN ROMANIA: PROPOSAL FOR A RELATIVE CHRONOLOGY

Julia BRAUNGART<sup>1</sup>

**Keywords:** *Late Neolithic, Music-note Linear Pottery culture, Eastern Romania, Chronology, Quantitative methods.*

**Cuvinte cheie:** *Neolitic târziu, cultura ceramicii liniare cu capete de note muzicale, estul României, cronologie, metode cantitative.*

## 1. Introduction

The late Neolithic Music-note Linear Pottery culture in Romania developed from the Linear Pottery culture in southwestern Slovakia and diffused to eastern Romania across Moravia, the southeastern marginal areas of Poland and the western part of Ukraine. In all mentioned areas, the ceramics have an ornamentation of incised lines with little dimples which remind us of noteheads<sup>2</sup>. In Romania, the stratigraphical relation between the Music-note Linear Pottery and the Starčevo-Criș culture was first demonstrated by M. Petrescu-Dîmbovița who discovered that in Perieni, the Music-note Linear Pottery layer overlaps the one of the Starčevo-Criș culture<sup>3</sup>. Independent chronologies for the Music-note Linear Pottery

---

<sup>1</sup> Freie Universität, Berlin.

<sup>2</sup> Concerning the decoration of the pottery, the term “notehead” will be used instead of “dimple”.

<sup>3</sup> M. Petrescu-Dîmbovița, *Sondajul stratigrafic de la Perieni*, in *MCA*, III, 1957, p. 65.



culture in Romania were established by E. Comşa<sup>4</sup>, S. Marinescu-Bîlcu<sup>5</sup> and N. Ursulescu<sup>6</sup>. The latter succeeded in incorporating the Romanian sherds into the local chronological scheme by J. Pavúk after comparing them with findings from southwestern Slovakia<sup>7</sup>.

In the following, an attempt will be made to chronologically structure the Music-note Linear Pottery culture in Romania with the aid of statistical methods (seriation and correspondence analysis). Analogue discoveries for the respective groups, formed by the correspondence analysis, based on Ursulescu's method will be searched afterwards in southwestern Slovakia, Moravia, southeastern Poland and Ukraine, in an attempt to create an independent chronology.

Due to the low number of features, a seriation and correspondence analysis of the vessel units seem to be the methods which produce the best results.

## 2. The material

The ceramics<sup>8</sup> which were analysed come from different sites in eastern Romania (map I). The biggest part - twelve sites - is located in the Moldova region (Ciurea, Dăneşti, Glăvăneştii Vechi, Iaşi-Munteni, Isaiia, Larga Jijia, Mihoveni, Perieni, Şcheia-Silişte, Traian, Târpeşti, Vîlcelele-Găureanca). Moreover, pottery from four sites in eastern and central Transylvania (Cipău-I.C.I.A., Cipău-Gără, Hărman, Rupea), from five sites in Muntenia (Cernica, Dudeşti, Ghinoaică, Sudiţi, Vadu Soreşti) and one site in Oltenia (Vădastra) was also considered. However, the ceramics from

---

<sup>4</sup> E. Comşa, *Quelques nouvelles données sur la culture à céramique rubanée en territoire roumain*, in: F. Ieno, J. Makkay (eds.), *Die aktuellen Fragen der Bandkeramik, a Vonaldiszes Keramia Idoszeru Kerdesei*, Székesfehérvár, 1972, p. 177.

<sup>5</sup> S. Marinescu-Bîlcu, *Aspects tardifs de la civilisation à céramique rubanée et sa contribution à la genèse de la civilisation Precucuteni*, in *PZ*, 46, 1971, 1, p. 34; Eadem, *Târpeşti. From Prehistory to History in Eastern Romania*, BAR Int. Ser. 107, Oxford, p. 16.

<sup>6</sup> N. Ursulescu, *Contribuţii privind evoluţia culturii ceramicii liniare pe teritoriul Moldovei*, in *ArhMold*, XIII, 1990, p. 35.

<sup>7</sup> For the detailed work of N. Ursulescu see: N. Ursulescu, *Contribuţii privind Neoliticul şi Eneoliticul din regiunile est-carpătice ale României*, Iaşi, 2000, p. 276.

<sup>8</sup> Besides the pottery from Isaiia, the ceramic analysis is based on figures from the literature.

the western part of Transylvania belong to the Alföld Linear Pottery whereupon the Apuseni Mountains are seen as the geographic border<sup>9</sup>.

Currently, six of these sites can be seen as possible settlements (Glăvăneștii Vechi<sup>10</sup>, Mihoveni<sup>11</sup>, Traian<sup>12</sup>, Târpești<sup>13</sup>, Isaiia<sup>14</sup>, Sudiți<sup>15</sup>) because of the house remains which were discovered there; in two cases (Dănești<sup>16</sup>, Cipău-Gără<sup>17</sup>), the feature situation is not clearly resolved. The only grave from Cipău-I.C.I.A. probably belongs to the Music-note Linear Pottery culture<sup>18</sup>.

Fine ware as well as medium-fine ware was researched in the ceramic analysis. The surface of the fine pottery is mostly burnished or polished. The use of a slip is rather seldom (fig. 16/4). In the majority of cases, the firing process produced gray colours, but black and yellow discolourings can appear. Tempering is not typical for the fine ware, but sometimes fine sand<sup>19</sup> as well as grog and grit<sup>20</sup> were added. There are only few differences between

<sup>9</sup> Z. Maxim, *Neo-Eneoliticul din Transilvania. Date arheologice și matematico-statistice*, Cluj-Napoca, 1999, p. 68.

<sup>10</sup> E. Comșa, *Așezarea culturii cu ceramică liniară de la Glăvăneștii Vechi*, in *Hierasus*, 5, 1994, p. 65.

<sup>11</sup> N. Ursulescu, *op. cit.*, 2000, p. 221-236.

<sup>12</sup> H. Dumitrescu, *Șantierul arheologic Traian (1954) (r. Buhuși, reg. Bacău)*, in *SCIV*, VI, 1955, 3-4, p. 462-469.

<sup>13</sup> S. Marinescu-Bîlcu, *op. cit.*, 1981, p. 8-23.

<sup>14</sup> N. Ursulescu *et alii*, *Isaiia, com. Răducăneni, jud. Iași. Punct: Balta Popii*, in *CCAR. Campania 2001*, București, 2002, p. 161; N. Ursulescu *et alii*, *Isaiia, com. Răducăneni, jud. Iași. Punct: Balta Popii*, in *CCAR. Campania 2004*, București, 2005, p. 188.

<sup>15</sup> V. Teodorescu, *Date preliminare privind cultura cu ceramică liniară pe teritoriul de la sud de Carpați al României*, in *SCIV*, 17, 1966, 2, p. 223.

<sup>16</sup> M. Petrescu-Dîmbovița, E. Zaharia, *Sondajul arheologic de la Dănești (r. Vaslui)*, in *MCA*, VIII, 1962, p. 49-51.

<sup>17</sup> N. Vlassa, *Cultura ceramicii liniare în Transilvania*, in *SCIV*, X, 1959, 2, p. 242.

<sup>18</sup> *Ibidem*, p. 240.

<sup>19</sup> N. Ursulescu, *op. cit.*, 1990, p. 16.

<sup>20</sup> A. Alexandrescu *et alii*, *Raport asupra săpăturilor de la Hărman, jud. Brașov (1961-1970)*, in *MCA*, X, 1973, p. 242.

the fine and the medium-fine ware concerning the temper size and the partially added organic material<sup>21</sup>.

As mentioned above, the decoration consists of incised lines forming rectilinear and curvilinear patterns supplemented by the noteheads (fig. 16-18). A detailed description of the different ornamentations follows in section 4.

### 3. Method

The characteristics which a vessel possesses at its fabrication time can be considered as coeval. Thus, vessels with at least two attributes can be seen as closed findings, which are subjected to the same laws as graves. It is assumed that graves which have similar burial objects must be temporally close. Thus, vessels with a comparable decoration must be created around the same time. So, sherds with no less than two characteristics can be used in the following analysis as significant objects.

If the statistical methods (seriation and correspondence analysis) sort the vessel fragments according to similarities, these similarities must be traced back to the shape or decoration of the vessel for the present. Future research can establish if these congruences depend on chronological, social or regional causes.

## 4. Characteristic system

### 4.1. Vessel typology (a)

Regarding the vessel shapes, a differentiation was made between bowls (a1), almost hemispherical vessels (a2) and biconical vessels (a3) (fig. 1). Besides, it was observed that there are retracted, straight and wide rims.

- a1** bowl
- a2** almost hemispherical vessel<sup>22</sup>
- a3** almost biconical vessel<sup>23</sup>
- aa** retracted rim
- ab** straight rim
- ac** wide rim

---

<sup>21</sup> N. Ursulescu, *op. cit.*, 1990, p. 16.

<sup>22</sup> See *Ibidem*, 1a, b.

<sup>23</sup> See *Ibidem*, 2a, b.

## 4.2. Characteristic analysis of the ornamentation systems

The analysis of the vessel decorations was made according to the method used by M. Strobel to structure the Eastern Linear Pottery culture<sup>24</sup>. It is a convenient method for the characteristic analysis of the ornamentation of the Music-note Linear Pottery culture in Romania. Thus, the decoration was separated into different disposition zones; because of the fragmentation level of the pottery, it made sense to differ only between rim- and main decoration. Further characteristics are the existence of special motifs, the notehead shape and the vertical row of the noteheads between rim- and main ornamentation.

### 4.2.1. The rim decorations (b)

The rim decoration consists of incised lines which run horizontally below the lip. Their number differs from one to four (b1-b4). In exceptional cases, more lines or different rim motifs appear. Moreover, there are sherds with no rim ornamentation (bk) and an indeterminable number of lines (b0). The position of the noteheads within the rim ornamentation also seems to be important (ba). They can either run vertically (baa) – i.e. one on each line among one another – or randomly (bab); little space between the noteheads (bac) is also a criterion.

- b** characterized by horizontally running lines (fig. 2)
  - b0** number of lines not determinable
  - b1** one line<sup>25</sup>
  - b2** two lines<sup>26</sup>
  - b3** three lines<sup>27</sup>
  - b4** four lines<sup>28</sup>
  - bk** no rim ornamentation
- ba** explained by the position of the noteheads (fig. 3)
  - baa** with vertically running noteheads
  - bab** with randomly running noteheads

<sup>24</sup> M. Strobel, *Ein Beitrag zur Gliederung der östlichen Linienbandkeramik. Versuch einer Merkmalsanalyse*, in *SASTUMA*, 4/5, 1995/1996, 1997.

<sup>25</sup> See N. Ursulescu, *op. cit.*, 1990, A1b.

<sup>26</sup> See *Ibidem*, A1a.

<sup>27</sup> See *Ibidem*, A1a.

<sup>28</sup> See *Ibidem*, A1c.

**bac** with little space between the noteheads

#### 4.2.2. *The main ornamentations (c)*

Two apparent groups emerge within the main decoration styles. The first main style group includes curvilinear motifs (c1), while the second consists of rectilinear patterns (c2). Both groups were placed on the central zone of the vessel where they usually do not appear together. Furthermore, the position of the notehead in the respective motif attracts interest (ca). Here, the position in the angles (caa) in rectilinear patterns and the siting in the apexes (cab) in curvilinear motifs were in evidence. It was also important if the noteheads were placed on the lines (cac) – i.e. not in the angles or apexes – or on the end of a line (cad).

##### *a. Curvilinear main decoration styles (c1)*

The curvilinear main ornamentations split into five different motifs which can be subdivided on the basis of the number of lines they were built of. In certain cases, the number of lines was not determinable or a motif only appeared with a particular number of lines.

**c1** curvilinear motifs (fig. 4)

**c101** arcs hanging into each other<sup>29</sup>

**c1011** unilinear arcs hanging into each other

**c1012** arcs consisting of two lines hanging into each other

**c1013** arcs consisting of three lines hanging into each other

**c1010** number of lines not determinable

**c102** standing arcs<sup>30</sup>

**c1021** unilinear standing arcs

**c1022** standing arcs consisting of two lines

**c1023** standing arcs consisting of three lines

**c1020** number of lines not determinable

**c103** hanging arcs<sup>31</sup>

**c1032** hanging arcs consisting of two lines

**c1033** hanging arcs consisting of three lines

**c1030** number of lines not determinable

**c104** double arcs

<sup>29</sup> See *Ibidem*, A10a, c.

<sup>30</sup> See *Ibidem*, A10e.

<sup>31</sup> See *Ibidem*, A10d.

**c105** hanging arcs with wide ends

**c1053** hanging arcs with wide ends consisting of three lines

*b. Rectilinear main decoration styles (c2)*

There are almost twice as many varieties of the rectilinear main decoration styles as curvilinear patterns. As before, a differentiation was made regarding the number of lines. However, for the analysis, a determination of line numbers was not important in half of the patterns.

**c2** rectilinear patterns (fig. 5)

**c201** angular band

**c2011** angular band consisting of one line<sup>32</sup>

**c2012** angular band consisting of two lines<sup>33</sup>

**c2013** angular band consisting of three lines<sup>34</sup>

**c2010** number of lines not determinable

**c202** alternately hanging and standing angles

**c2021** alternately hanging and standing angles consisting of one line<sup>35</sup>

**c2023** alternately hanging and standing angles consisting of three lines

**c2020** number of lines not determinable

**c203** branch motif<sup>36</sup>

**c204** hanging angles

**c2041** hanging angles consisting of one line

**c2042** hanging angles consisting of two lines

**c2043** hanging angles consisting of three lines

**c2040** number of lines not determinable

**c205** cross pattern

**c206** rectangular motif

**c207** horizontal lines

**c208** vertical lines<sup>37</sup>

---

<sup>32</sup> See *Ibidem*, A2d.

<sup>33</sup> See *Ibidem*, A3b.

<sup>34</sup> See *Ibidem*, A3b.

<sup>35</sup> See *Ibidem*, A2a.

<sup>36</sup> See *Ibidem*, 2k.

<sup>37</sup> See *Ibidem*, A8b.

**c209** diagonal lines*c. The position of the noteheads (ca)*

The position of the noteheads differs within the main motifs. Thus, concerning the rectilinear patterns, the notehead was placed either exactly on their edges (caa) – meaning where two lines come together forming an angle – or on the line (cac). The latter also applies to the curvilinear patterns. Besides, the notehead can be placed in the apex (cab) meaning the middle of an arc. In both categories, the notehead was used at the end of a line (cad).

**ca** characterized by the position of the notehead within the main motif (fig. 6)

**caa** on the edges

**cab** in the apex

**cac** on the line

**cad** at the end of a line

*d. The shape of the noteheads (d)*

Four different types of noteheads could be observed. The common shape is the round notehead (da), but oval varieties (db) are not uncommon either. Triangular noteheads (dc) rather constitute an exception, while stroke-shaped ones only appear in Vădastra.

**d** defines the shape of the noteheads (fig. 7)

**da** round

**db** oval

**dc** triangular

*4.2.3. The occurrence of special motifs (e)*

Motifs which appear on a vessel unit beside the usual main or rim decoration and do not belong to the proposed system of ornamentation were described as special motifs. There are motifs in the shape of upwardly open angles, rows of noteheads, randomly placed noteheads, short incised lines which run parallel to the lines of the main motif and cross patterns which were incised on the bottom of the vessel.

**e** special motif

*4.2.4. Vertical row of noteheads between main and rim decoration (f)*

As another characteristic, the vertical row of noteheads belonging to the rim and main decoration was included in the analysis because it is a noticeable element of the pottery of the Želiezovce group in southwestern

Slovakia. Some sherds of the Music-note Linear Pottery present the same detail. Therefore, it could possibly be seen as a suitable factor in determining the chronological position of certain vessel units.

f characterized by a vertical row of the noteheads between rim and main ornamentation (fig. 8).

### 5. Correspondence analysis and seriation

Altogether, the research included 513 fine and medium-fine ware sherds out of which 181 could be used for the analysis. After the correspondence analysis (fig. 9) and seriation (fig. 10) were made on the raw data, the features which appear too often were taken out consecutively in eight steps because they would affect the final result.

These features are: 1. Round notehead (da); 2. Retracted edge (aa); Notehead at the end of the line (cad); 3. Almost biconical vessel (a3); Notehead on the line (cac); 4. Almost hemispherical vessel (a2); 5. Little space between the noteheads in the rim decoration (bac); 6. Vertically running noteheads in the rim decoration (baa); Vertical row of noteheads between rim and main ornamentation (f); 7. Special motif (e); 8. Notehead on the edges (caa) and in the apex (cab) of the main motif.

Due to the removal of the mentioned characteristics, the rectangular motif (c206), the hanging arcs consisting of three lines (c1033) and the horizontal lines (c207) also fall out of the analysis because of too little characteristic combinations.

#### Evaluation

After all frequent characteristics had been taken out, the correspondence analysis shows the following pattern: the order of the vessel units is L-shaped and reminds us of a parabola (fig. 11; 12). Eight groups can be pointed out and each group can be related to certain decoration styles and rim models (fig. 12).

The first group (green) includes vessel units whose specific feature is the absence of the rim ornamentation (bk). Within this group, different main decoration styles become apparent: the cross pattern (c205), alternately hanging and standing angles (c2020), the angular band (c2010, c2012), hanging arcs with wide ends consisting of three lines (c1053) and standing



arcs consisting of one (c1021) and two lines (c1022). Moreover, the bowl (a1) and the wide rim (ac) appear.

The following group (brown) combines a part of the main decoration styles from the first group (green) - c205, c2020, c1053 - with the rim ornamentation of an indeterminable number of lines (b0).

The red group, which already leads over to the central point cloud, includes vessel units whose specific main decoration consists of standing arcs (c102). There are unilinear (c1021) as well as bilinear (c1022) arcs. Concerning the rim ornamentation, the latter are combined with two (b2), three (b3) or an indeterminable number (b0) of rim lines, while the former only appears with three horizontal lines (b3). Furthermore, the bilinear angular band (c2012) exists in combination with two (b2) or three (b3) rim lines, the wide rim (ac) and the triangular notehead (dc). The branch pattern (c203) appears together with two rim lines (b2) and the wide rim (ac). Thus, the red group includes characteristics which are contained in the preceding (green) as well as in the following group (white).

The central point cloud (white) combines, like the preceding red group, vessel fragments with two (b2), three (b3) and an indeterminable (b0) number of rim lines, but to a great extent without including the characteristics of the green group. Three rim lines (b3) are in combination with the interleaved hanging arcs consisting of three lines (c1013), the alternately hanging and standing angles made of three lines (c2023), the standing arcs composed of three lines (c1023), the bilinear hanging angles (c2042), the double angular band (c2012), the interleaved hanging arcs made of two lines (c1012), the unilinear alternately hanging and standing angles (c2021) and the unilinear angular band (c2011). Moreover, three rim lines are connected to the hanging arcs (c1030), the angular band (c2010), the double-arcs (c104) and the hanging angles (c2040).

Together with two rim lines (b2) the following characteristics appear: the interleaved hanging arcs composed of three lines (c1013), the alternately hanging and standing angles consisting of three lines (c2023), the triple angular band (c2013), the hanging arcs with wide ends composed of three lines (c1053), the standing arcs made of three lines (c1023), the bilinear hanging angles (c2042), the double angular band (c2012) and the interleaved hanging arcs consisting of one and two lines (c1011, c1012). Also, the

hanging arcs (c1030), the standing arcs (c1020), the branch pattern (c203), the double-arcs (c104), the angular band (c2010) and the interleaved hanging arcs (c1010) are combined to the rim ornamentation of two lines (b2).

The rim decoration of an indeterminable number of lines (b0) appears together with the interleaved hanging arcs made of three lines (c1013), the standing arcs composed of three lines (c1023), the bilinear interleaved hanging arcs (c1012) and the unilinear interleaved hanging arcs (c1011). Moreover, the alternately hanging and standing angles (c2020), the hanging angles (c2040), the standing arcs (c1020), the interleaved hanging arcs (c1010), the hanging arcs (c1030), the angular band (c2010) and the branch pattern (c203) are combined with the rim ornamentation of an indeterminable number of lines (b0).

The white group further includes the oval notehead (db), which can be assigned more frequently to the interleaved hanging arcs made of two and three lines (c1012, c1013) than to any other motif. The same also applies to the triangular notehead (dc). The straight (ab) and the wide (ac) rimshape appear in this group as well.

Characteristic of the yellow group is the rim ornamentation consisting of four lines (b4). It is combined with the triple angular band (c2013) as well as with the hanging angles composed of three lines (c2043).

The latter is also characteristic of the black group, which is located between the central point cloud and the yellow group. It presents a connection between both groups by linking the hanging angles made of three lines (c2043) with the rim decoration of three lines (b3).

The blue group can be separated into two subgroups, *a* and *b*, on the basis of the number of rim lines. Thus, the vessel units of the blue group *a* have clearly one rim line (b1), while the number of rim lines of the blue group *b* is not determinable (b0). The main decoration styles of the blue group consist of vertical (c208) and diagonal (c209) lines. The bilinear hanging arcs (c1032) and the oval notehead (db) appear only in the blue group *a*. The orange group is clustered parallel to the blue group. On the one hand, it contains the bilinear hanging arcs (c1032) in combination with three rim lines (b3) and straight rim (ab) and on the other hand the

interleaved hanging arcs consisting of three lines (c1013) together with one rim line (b1) and the straight rim (ab).

## 6. Proposal for a chronological scheme of the Music-note Linear Pottery culture in Romania

In an attempt to establish a chronological system for the Music-note Linear Pottery in Romania, the groups created on the basis of ornamentation will be incorporated into the chronological schemes already developed (southwestern Slovakia, Moravia, southeastern Poland, western Ukraine).

The green group, which is especially characterized by the absence of rim ornamentation (bk), shows similarities to the decorations of the first and second phases of the Music-note Linear Pottery in its distribution area. The absence of the rim decoration (bk) and the standing arcs (c1021, c1022) exist in the southwest Slovakian early phase<sup>38</sup>, in phase I,1 in southeastern Poland<sup>39</sup> and in phase IIa<sub>1</sub> in Moravia<sup>40</sup>, while the cross motif (c205) in southwestern Slovakia appears starting from the middle phase<sup>41</sup>. The same applies to the angular band (c2010, c2012), which appears in southwestern Slovakia in the middle phase and in Moravia from phase IIa<sub>2</sub><sup>42</sup>.

The brown group combines the cross motif (c205) with an indeterminable number of rim lines (b0); its analogies could be seen in the middle phase of southwestern Slovakia<sup>43</sup>.

The red group which connects the standing arcs (c1021, c1022) and the angular band (c2012) with two or three rim lines (b2, b3) does not only have parallels in the early phases in southwestern Slovakia, Moravia and

---

<sup>38</sup> J. Pavúk, *Chronologie der Želiezovce-Gruppe*, in *SlovArch*, XVII, 1969, fig. 1/1-3; 2/14.

<sup>39</sup> J. K. Kozłowski, *Über die Untersuchungen der östlichen Peripherien der Linien-Bandkeramik-Kultur*, in *AAC*, XIV, 1974, fig. 14/2, 8.

<sup>40</sup> Z. Čížmář, *Nástin relativní chronologie kultury s lineární keramiky na Moravě. Poznámky k vývoji výzdobného stylu. Zur relativen Chronologie der Linearbandkeramik in Mähren. Bemerkungen zur Entwicklung des Zierstils*, in *AMMSS*, LXXXIII, 1998, fig. 4/7, 12.

<sup>41</sup> J. Pavúk, *op. cit.*, 1969, fig. 4/1.

<sup>42</sup> See footnotes 45 and 46.

<sup>43</sup> J. Pavúk, *op. cit.*, 1969, fig. 4/1.

southeastern Poland because of the standing arcs (c1021, c1022)<sup>44</sup>, it also has parallels in the middle and late phase of the younger Linear Pottery culture and the early phase of the Želiezovce group in southwestern Slovakia<sup>45</sup>, in the Moravian phases IIa<sub>2</sub>, IIb and IIc<sup>46</sup>, in the phases I,2, I,3 and II,A in southeastern Poland<sup>47</sup> as well as in the phases II and III in the Ukraine<sup>48</sup> on the basis of the rim lines (b2, b3) or the angle band (c2012).

Similarly, some elements of the white group correspond with characteristics of the middle and late phase as well as with those of the early phase of the Želiezovce group in southwestern Slovakia and of the contemporaneous phases from the distribution area. So, the interleaved hanging arcs (c1011, c1012, c1013, c1010) build the most characteristic motif beside the rim ornamentation consisting of two (b2) and three (b3) lines in the white group. These ornamentations have analogies in southwestern Slovakia (middle and late phase of the younger Linear Pottery culture and early phase of the Želiezovce group)<sup>49</sup>, Moravia (IIa<sub>2</sub>, IIb, IIc)<sup>50</sup>, southeastern Poland (I,2, I,3, II,A)<sup>51</sup> and Ukraine (II, III)<sup>52</sup>. Likewise, the angular band (c2012, c2010) appears as a common element and has its parallels in the middle and late phase of the younger Linear Pottery culture and the early phase of the Želiezovce group in southwestern Slovakia as well as in the Moravian phase IIa<sub>2</sub>, IIb and IIc and in the phase II in the

<sup>44</sup> See footnotes 38, 39, 40.

<sup>45</sup> Rim lines: J. Pavúk, *op. cit.*, 1969, fig. 3; 6; 13; angle band: *Ibidem*, fig. 3/11; 10/12; 15/18.

<sup>46</sup> Rim lines: Z. Čižmář, *op. cit.*, 1998, fig. 5/2; 6/15; 8/2; angle band: *Ibidem*, fig. 5/1; 11/1; 8/11.

<sup>47</sup> Rim lines: J. K. Kozłowski, *op. cit.*, 1974, fig. 18-20.

<sup>48</sup> Rim lines: N. S. Kotova, *Neolithization in Ukraine*, BAR Int. Ser. 109, Oxford, 2003, fig. 88-89; angle band: E. K. Černyš, *Istorii na selnijaeneolitičeskogovremeni v srednem Podnestrovja*, MIA 102, 1962, fig. 7/31, 33.

<sup>49</sup> Interleaved hanging arcs: J. Pavúk, *op. cit.*, 1969, fig. 5/7-8; 6/7; 16/1; rim lines: see footnote 45.

<sup>50</sup> Rim lines: see footnote 46; interleaved hanging arcs: Z. Čižmář, *op. cit.*, 1998, fig. 6/1, 2.

<sup>51</sup> Interleaved hanging arcs: J. K. Kozłowski, *op. cit.*, 1974, fig. 18/2, 5; 20/ 1, 7; rim lines: see footnote 47.

<sup>52</sup> Interleaved hanging arcs: N. S. Kotova, *op. cit.*, 2003, fig. 88, 4; E. K. Černyš, *op. cit.*, 1962, fig. 7/9; 10/4; rim lines: see footnote 48.

Ukraine<sup>53</sup>. The hanging arcs (c1030) are reflected in the decoration of the late phase in southwestern Slovakia<sup>54</sup>. Possible analogies to the double-arcs (c104) could exist in the middle phase in southwestern Slovakia<sup>55</sup>, whereas the oval shape of the notehead (db) could already point to the beginning of the Želiezovce group<sup>56</sup>. The branch pattern (c203), which only appears in Târpești<sup>57</sup>, has analogies to a fragment from the southwest Slovakian site of Bajč<sup>58</sup> which is related to the early phase of the Želiezovce group.

The characteristic of the straight rim (ab) from the orange group could correspond to the horizon of the late phase in southwestern Slovakia<sup>59</sup>.

The decoration styles of the blue group do not agree with the ornamentations from the relevant regions. However, the decoration of one rim line (b1) is a characteristic for all early phases of the Music-note Linear Pottery<sup>60</sup>. This fact stands in contrast to the following proposed hypothesis: the ornamentation of one rim line (b1) appears with the vertical (c208) and the diagonal lines (c209) which do not have any correspondence in the distribution area. The pottery with influences from the Želiezovce group<sup>61</sup> existing only in Târpești makes clear that at this stage there either did not exist anymore relations to the original regions of the Music-note Linear Pottery or they were too weak. Therefore, the decoration of vertical (c208) and diagonal lines (c209) in connection with one rim line could be an independent Romanian development that dispersed in a late phase when the contact to the other regions hardly existed any longer.

Furthermore, it stands out that the motif of the horizontal lines (c207), which was eliminated from the analysis because of too few characteristic combinations, appears in Traian and Târpești next to an

---

<sup>53</sup> See footnotes 45, 46, 48.

<sup>54</sup> J. Pavúk, *op. cit.*, 1969, fig. 6/2; 8/9.

<sup>55</sup> *Ibidem*, fig. 3/7.

<sup>56</sup> *Ibidem*, fig. 13/16; 15/18; 16/5.

<sup>57</sup> S. Marinescu-Bîlcu, *op. cit.*, 1981, fig. 28/11.

<sup>58</sup> J. Pavúk, *op. cit.*, 1969, fig. 12/10.

<sup>59</sup> *Ibidem*, fig. 8/6, 7, 8.

<sup>60</sup> *Ibidem*, fig. 2/8-9; Z. Čížmář, *op. cit.*, 1998, fig. 4/5, 7; J. K. Kozłowski, *op. cit.*, 1974, fig. 14/1, 4; N. S. Kotova, *op. cit.*, 2003, fig. 87.

<sup>61</sup> S. Marinescu-Bîlcu, *op. cit.*, 1981, fig. 27/9; 28/4; 29/6.

ornamentation of rows of dots<sup>62</sup>. Analogies to these dot rows can be found in the Ukrainian site of Niezwiska where the horizontal lines (c207) appear at the same time<sup>63</sup>. This decoration of rows of dots is found in Târpești next to ceramics influenced by the Želiezovce group. Besides, it has analogies in Šárka as well<sup>64</sup>. All of the previously mentioned facts could indicate that the decoration of dots is a late element within the Music-note Linear Pottery. Thus, the coexistence of the rows of dots and the horizontal lines (c207) in the sites of Târpești, Traian and Niezwiska could likewise give the horizontal lines (c207) a late position within the Music-note Linear Pottery. In Perieni, Isaiia and Târpești, the horizontal lines (c207) appear along with the vertical (c208) and diagonal lines (c209), possibly supporting the proposed hypothesis.

Another motif, which fell out of the analysis, the rectangular pattern (c206), appears both in Perieni and Glăvăneștii Vechi. Its parallels are placed in the southeast Polish phase I3<sup>65</sup>. From the same chronological horizon are the cross motifs which were placed on the outer bottom of the vessel. They are known in Târpești, Glăvăneștii Vechi and Traian and have equivalents in southwestern Slovakia<sup>66</sup>. A geometric motif, which was almost identically formed on all fragments, arises only in Glăvăneștii Vechi<sup>67</sup>.

It becomes apparent that the characteristics mainly split and group themselves along the axes according to the different number of rim lines. The decoration of one rim line (b1) and of four rim lines (b4) only show a low connection to the central point cloud (white group) whose main characteristics are two (b2) and three rim lines (b3). On the other hand, the vessel units without any rim ornamentation (b0) are well integrated (fig. 11). Thus, the cross pattern (c205) overlaps, as was mentioned above, between the green and brown group and the standing arcs (c1021, c1022) and the

---

<sup>62</sup> *Ibidem*, fig. 28/5, 7, 8, 9; H. Dumitrescu, Vl. Dumitrescu, *Activitatea șantierului arheologic Traian*, in *MCA*, VIII, 1962, fig. 7/4.

<sup>63</sup> E. K. Černys, *op. cit.*, 1962, fig. 7/19-21; 10/18.

<sup>64</sup> V. Slavonil, *Studie O Sareckem Typu. Vymezení pojmu. Sbornik Narodního Muzea V Praze*, in *AMNP.A*, XV, 1961, 3, fig. 6/16; 18/5.

<sup>65</sup> J. K. Kozłowski, *op. cit.*, 1974, p. 32.

<sup>66</sup> J. Pavúk, *op. cit.*, 1969, fig. 7/6.

<sup>67</sup> E. Comșa, *op. cit.*, 1994, fig. 24/5, 12.

angular band (c2010, c2012) within the green and red group. This shows a clear overlap concerning the main decoration for vessel units without rim ornamentation (bk) and for those with two (b2) and three rim lines (b3). The only modest integration of the blue (main characteristic: b1) and yellow (main characteristic: b4) groups could possibly depend on regional reasons or on a too little material basis.

The statistic evaluation clearly shows that the Music-note Linear Pottery culture can apparently be divided on the basis of the rim decorations into three phases, which is also shown by the statistical spread in the correspondence analysis. The main decorations seem to have little chronological relevance, whereas the rim ornamentation can be estimated as chronologically sensitive. The first group (green) connects the angular band (c2010), which does not appear in southwestern Slovakia until the middle phase, with no rim decoration (bk), which is a characteristic of the early phase there. This could mean that in Romania the first phase (main characteristic: bk) began in a chronological horizon which corresponds not only with the early southwest Slovakian phase but also with its middle phase. Thus, the second phase (main characteristics: b2, b3) could have its beginning in a time frame which is consistent with the sophisticated middle phase and the late phase of southwestern Slovakia. The last phase of the Music-note Linear Pottery (main characteristic: b1) could envelop a chronological horizon that at least goes along with the early phase of the *Želiezovce* group (tab. 1).

## 7. Expansion

The results allow the following statements concerning the occupation of certain sites (fig. 13; 14; 15). With the help of the rim decoration and main ornamentations (c207, c208, c209) presumably only significant for the last phase, it can be shown that the sites *Glăvăneștii Vechi*, *Traian*, *Dănești*, *Larga Jijia*, *Mihoveni* and *Perieni* belong to the first and second phase of the proposed chronological system for Romania. *Dudești*, *Vadu Sorești*, *Sudiți*, *Vădastra*, *Hărman*, *Cipău-Gără*, *Șcheia-Siliște*, *Isaiia* and *Târpești* not seem to appear until the middle phase. The last two mentioned sites even exist from a temporary level which corresponds with the southwest Slovakian middle phase (based on the decoration c104). The ceramics from *Târpești*

definitely influenced by the Želiezovce group demonstrate a persistence of the site until the last phase. The same probably also applies to Isaiia (c209, c207), Traian (c207, dot decoration), Glăvăneștii Vechi (c208, c209), Mihoveni (c208), Larga Jijia (c209), Dănești (c207), Perieni (c207, c209) and Rupea (c208).

When the low find density and the material basis are taken into consideration, the following picture of the expansion process of the Music-note Linear Pottery culture in Romania emerges. The first appearance of the Music-note Linear Pottery is evident in the Moldova region in the first phase (map II), which is proved by the sites Glăvăneștii Vechi, Traian, Larga Jijia, Mihoveni, Dănești and Perieni. In the second phase (map III), the Music-note Linear Pottery culture seems to expand to Muntenia (Dudești, Vadu Sorești, Sudiți) and Oltenia (Vădastra) as well as to Transylvania (Hărman, Cipău-Gără). At the same time new sites appear in the region of Moldova (Târpești, Isaiia, Șcheia-Siliște). A continuation until the third phase is likely (map IV) in Transylvania (Rupea) and in the Moldova region (Târpești, Isaiia, Glăvăneștii Vechi, Traian, Mihoveni, Perieni, Larga Jijia, Dănești).

### 8. Analogies to the Music-note Linear Pottery culture in Romania

In Romania, the Music-note Linear Pottery culture directly follows the Starčevo-Criș culture, while in all other regions an older phase of the Linear Pottery culture without notehead ornamentation precedes the Music-note Linear Pottery<sup>68</sup>. Only influences of this older phase could be found in two Romanian Starčevo-Criș settlements (Grumăzești, Suceava)<sup>69</sup>. Furthermore, it was observed that big long houses dominate in western Slovakia<sup>70</sup> and Moravia<sup>71</sup>, while in Poland<sup>72</sup>, Ukraine<sup>73</sup> and in the Republic of

<sup>68</sup> Z. Čižmář, *op. cit.*, 1998, 137; A. Kulczycka-Leciejewiczowa, *Kultura ceramiki wstęgowej rytej w Polsce. Zarys problematyki*, in J. K. Kozłowski (ed.), *Z badań nad kulturą ceramiki wstęgowej rytej: materiały konferencji w Nowej Hucie dn. 22 IV 1969*, Polskie Towarzystwo Archeologiczne, Kraków, 1970, p. 23; J. Pavúk, *op. cit.*, 1969, p. 269; N. S. Kotova, *op. cit.*, 2003; N. Ursulescu, *op. cit.*, 2000, p. 277.

<sup>69</sup> S. Marinescu-Bîlcu, *Asupra unor probleme ale culturii Criș*, in *SCIVA*, 26, 1975, 4, p. 500; N. Ursulescu, *op. cit.*, 2000, p. 276.

<sup>70</sup>J. Pavúk, *Štúrovo. Ein Siedlungsplatz der Kultur mit Linearbandkeramik und der Želiezovce-Gruppe*, Nitra, 1994, p. 64.



Moldova<sup>74</sup> - as well as in Romania - small house features are most common. Concerning the inside of the houses, there are analogies regarding the fire places. Thus, the pit hearth of the ground-level house in Mihoveni has analogies in Poland<sup>75</sup>, Ukraine and in the Republic of Moldova<sup>76</sup>, where this type frequently appears. Moreover, in Poland until now burials were only discovered inside the settlements<sup>77</sup>, whereas in southwestern Slovakia<sup>78</sup> and Moravia<sup>79</sup> cemeteries are also documented. In all mentioned areas inhumation dominates, the dead person being buried in contracted position<sup>80</sup>.

---

<sup>71</sup> R. Tichý, *Osídlení s volutovou keramikou na Moravě*, in *Památky archeologické*, 53, 1962, p. 304.

<sup>72</sup> A. Kulczycka-Leciejewiczowa, *op. cit.*, 1970, p. 34.

<sup>73</sup> E. K. Černýš, *Territoire orientale des tribus de la céramique linéaire*, in *Atti del VI congresso internazionale delle scienze preistoriche e protostoriche, II, Roma 29 agosto-3 settembre 1962 / II, Comunicazioni sezioni I-IV*, UISPP, Firenze, 1965, p. 264.

<sup>74</sup> Idem, *op. cit.*, 1965, 264; T. Passek, *L'Europe Occidentale et l'Europe Orientale à l'époque néolithique*, in *Atti Del VI Congresso Internazionale Delle Scienze Preistoriche e Protostoriche. Roma 29 Agosto - 3 Settembre 1962. Vol. I. Relazione Generali*, Roma, 1962, p. 131.

<sup>75</sup> A. Kulczycka-Leciejewiczowa, *op. cit.*, p. 34.

<sup>76</sup> E. K. Černýš, *op. cit.*, 1965, p. 264.

<sup>77</sup> A. Kulczycka-Leciejewiczowa, *op. cit.*, 1970, p. 35.

<sup>78</sup> I. Cheben, *Bajč – eine Siedlung der Želiezovce-Gruppe. Entwicklungsende der Želiezovce-Gruppe und Anfänge der Lengyel-Kultur*, *Universitätsforschungen zur prähistorischen Archäologie*, Bd. 68, Bonn, 2000, p. 62.

<sup>79</sup> Podborský *et alii*, *Dvě pobřežské neolitického lidu s lineární keramikou ve Vedrovicích na Moravě*, Brno, 2002, p. 322.

<sup>80</sup> I. Cheben, *op. cit.*, p. 78; A. Kulczycka-Leciejewiczowa, *op. cit.*, p. 35; Podborský *et alii*, *op. cit.*, p. 324.

*CULTURA CERAMICII LINIARE CU CAPETE DE NOTE MUZICALE ÎN ESTUL ROMÂNIEI: PROPUNERE PENTRU O CRONOLOGIE RELATIVĂ*

*(Rezumat)*

*Prin această lucrare se încearcă stabilirea unei cronologii pentru cultura ceramicii liniare cu capete de note muzicale (Notenkopfkeramik) în România cu ajutorul serierilor și analizei corespondențelor fragmentelor ceramice. Pe baza acestora se încearcă expunerea procesului de ocupare a teritoriilor. Cercetarea s-a bazat pe fragmentele descoperite în 22 de situri arheologice din estul României ce prezintă mai mult de două caracteristici semnificative. În privința caracteristicilor au fost considerate atât forma vaselor cât și decorul, care a fost separat în funcție de dispunere (pe buză și decorul principal). În funcție de rezultatul analizei corespondențelor, se pot crea grupuri diferite ce pot fi apoi legate de analogiile materialelor aparținând culturii ceramicii liniare cu capete de note muzicale din Slovacia, Moravia, sudul Poloniei și vestul Ucrainei. Astfel, a devenit evident faptul că numărul diferit de linii de pe partea superioară a vasului este motivul principal pentru care decorul se desparte și se grupează în jurul axei, în timp ce motivele decorative principale par să nu aibă o relevanță cronologică. Astfel, cultura ceramicii liniare cu note muzicale din România poate fi împărțită, pe baza decorului de pe buza vasului, în trei faze ce pot fi comparate cu schema cronologică locală pentru sud-vestul Slovaciei întocmită de către J. Pavúk.*

**Lista ilustrațiilor:**

- Fig. 1. Formele de vase relevante pentru analiză.
- Fig. 2. Decorul buzei.
- Fig. 3. Poziționarea notelor muzicale.
- Fig. 4. Stiluri ale decorului principal curbolar.
- Fig. 5. Stiluri ale decorului principal rectiliniu.
- Fig. 6. Poziționarea notelor muzicale în stilurile principale de decor.
- Fig. 7. Forma notelor muzicale.
- Fig. 8. Rânduri verticale de note muzicale între motivele principale și cele de pe buză.
- Fig. 9. Analiza corespondențelor tuturor fragmentelor de vase: unități.
- Fig. 10. Serierea datelor.
- Fig. 11. Analiza corespondențelor după înlăturarea trăsăturilor da, aa, cad, a3, cac, a2, bac, baa, f, e, caa and cab: trăsături.
- Fig. 12. Analiza corespondențelor, ordonate pe grupuri, după înlăturarea trăsăturilor da, aa, cad, a3, cac, a2, bac, baa, f, e, caa și cab: unități.

Fig. 13. Numărul fragmentelor de vase ce au caracteristici corespunzând fazelor.

Fig. 14. Numărul fragmentelor de vase ce au caracteristici corespunzând fazelor.

Fig. 15. Numărul fragmentelor de vase ce au caracteristici corespunzând fazelor.

Fig. 16. Isaiia-Balta Popii. Ceramică fină.

Fig. 17. Isaiia-Balta Popii. Ceramică fină; 1, 2, 4 din șanțul de fundare a locuințelor 8/8A.

Fig. 18. Isaiia-Balta Popii. Ceramică fină; 1-7 din locuința 4.

### Hărți:

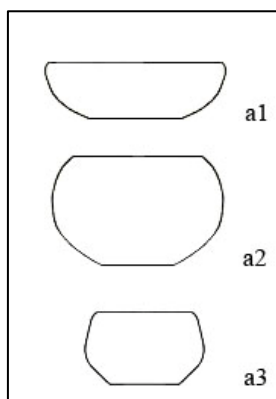
Harta I. Situri cu descoperiri ce pot fi încadrate în cultura ceramici liniare din România: 1. Cernica; 2. Cipău-Gără, Cipău-I.C.I.A.; 3. Ciurea; 4. Dănești; 5. Dudești; 6. Ghinoaica; 7. Glăvăneștii Vechi; 8. Hărman; 9. Iași; 10. Isaiia; 11. Larga Jijia; 12. Mihoveni; 13. Perieni; 14. Rupea; 15. Șcheia-Siliște; 16. Sudiți; 17. Târpești; 18. Traian; 19. Vadu Sorești; 20. Vădastra; 21. Vâlcelele-Găureanca.

Harta II. Situri cu descoperiri ce pot fi încadrate în cultura ceramicii liniare din România (pentru numere vezi harta I): Faza timpurie. Numărul fragmentelor de vase semnificative (se aplică și hărților III și IV).

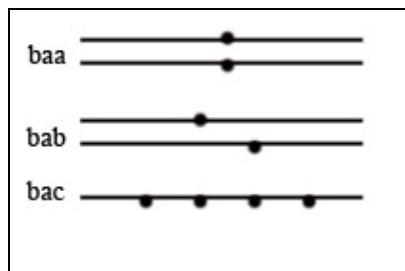
Harta III. Situri cu descoperiri ce pot fi încadrate în cultura ceramicii liniare din România (pentru numere vezi harta I): faza mijlocie

Harta IV. Situri cu descoperiri ce pot fi încadrate în cultura ceramicii liniare din România (pentru numere vezi harta I): faza târzie.

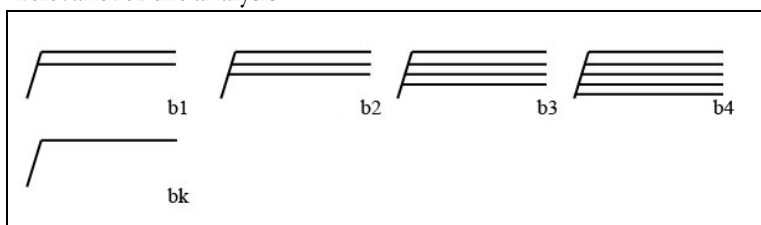
Tabel 1. Cronologia relativă a culturii ceramici liniare cu capete de note muzicale în sud-vestul Slovaciei, Moravia, sud-estul Poloniei, Ucraina și România (J. Braungart).



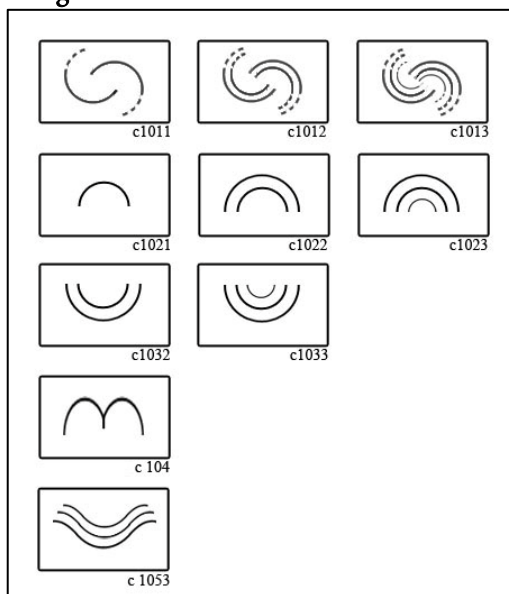
**Fig. 1.** Overview over the vessel shapes relevant for the analysis



**Fig. 3.** Position of the noteheads



**Fig. 2.** Overview over the rim decorations



**Fig. 4.** Overview of the curvilinear main decoration styles

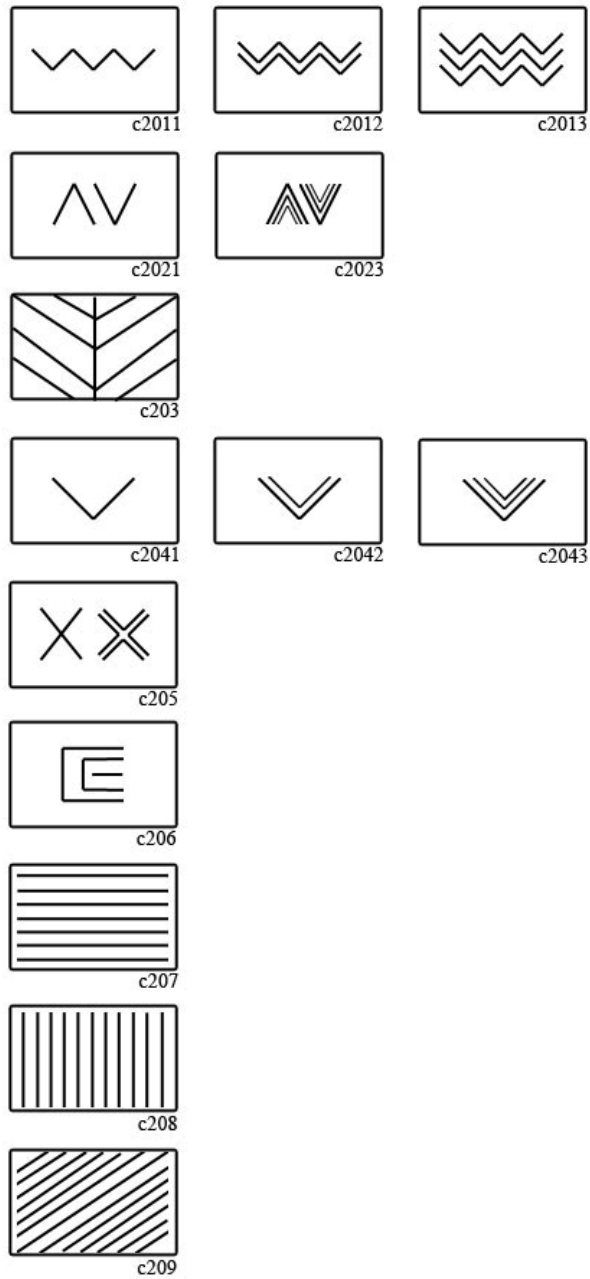


Fig. 5. Overview of the rectilinear main decorations styles

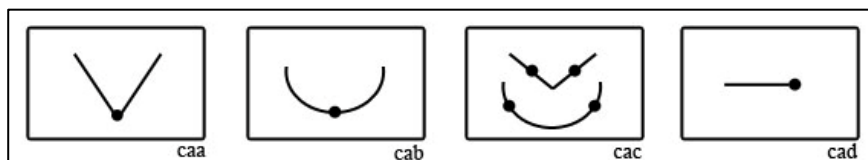


Fig. 6. Position of the noteheads in the main decoration styles

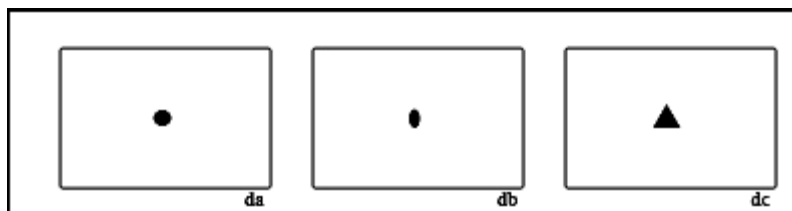


Fig. 7. Shape of the noteheads

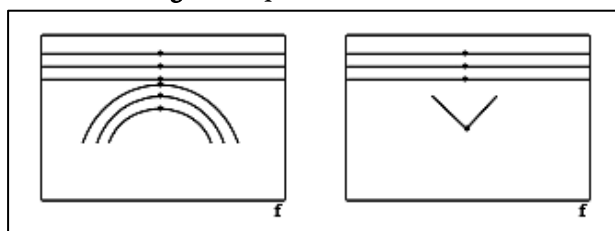


Fig. 8. Vertical row of the noteheads between main and rim motif

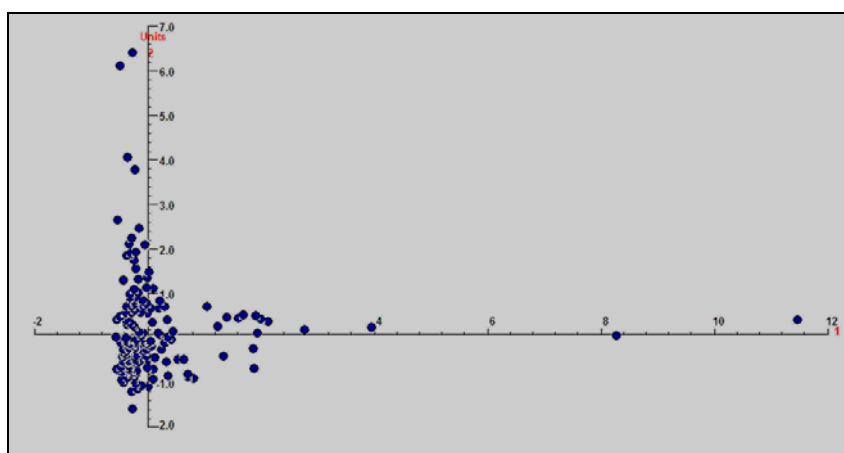


Fig. 9. Correspondence analysis of all vessel units: the units

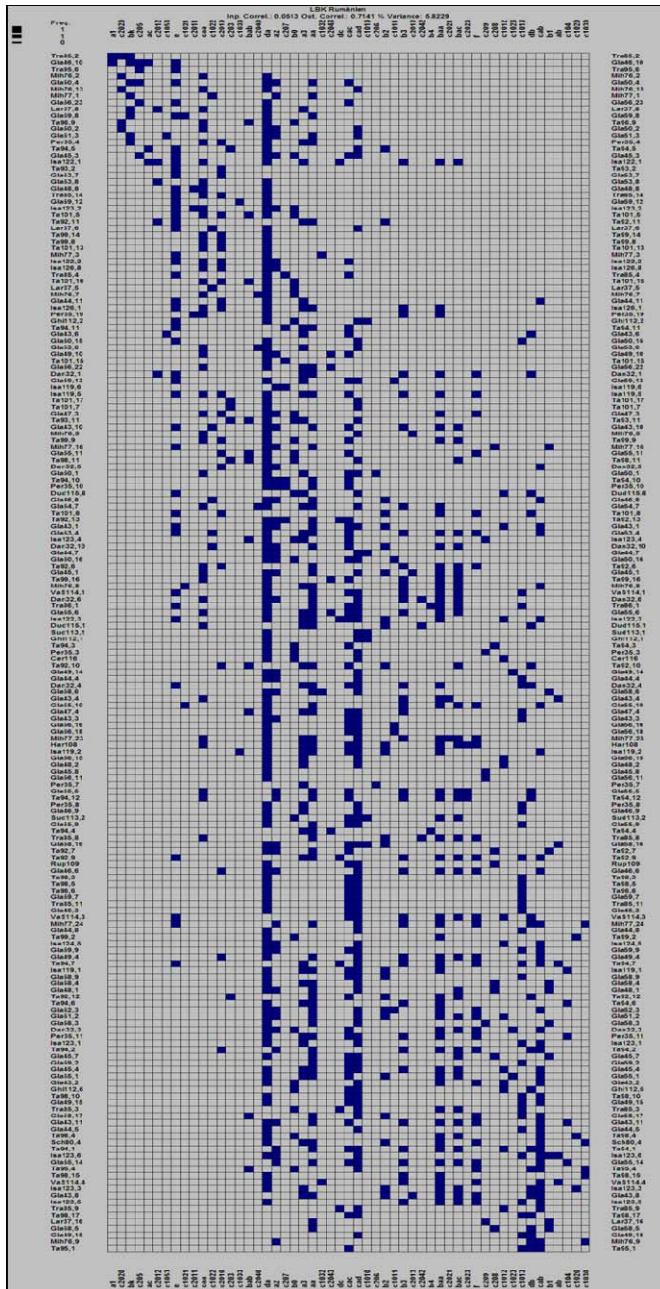


Fig. 10. Seriation of the raw data





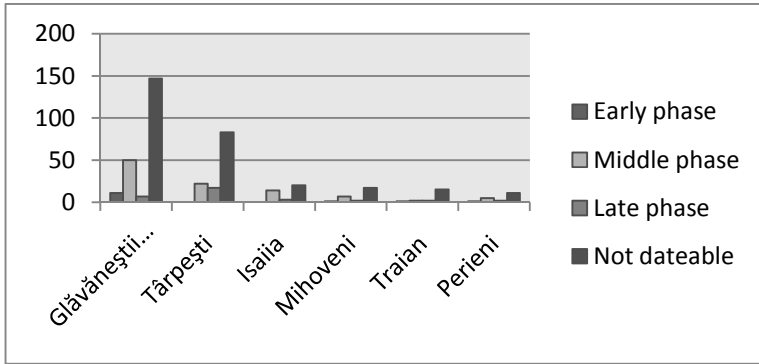


Fig. 13. Number of vessel units possessing characteristics corresponding to the phases

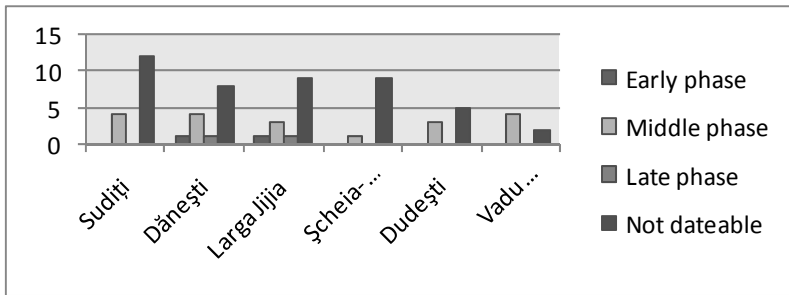


Fig. 14. Number of vessel units possessing characteristics corresponding to the phases

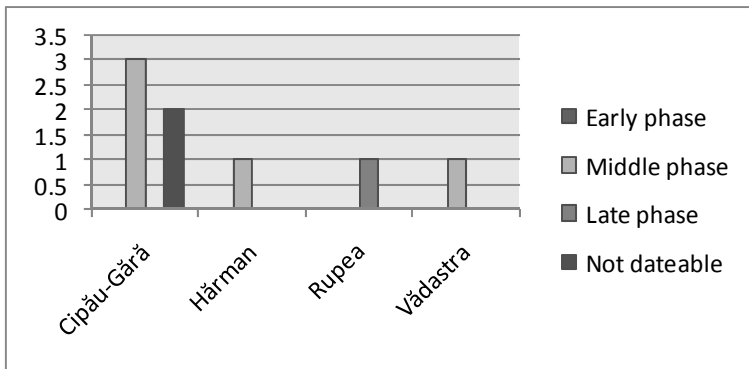


Fig. 15. Number of vessel units possessing characteristics corresponding to the phases

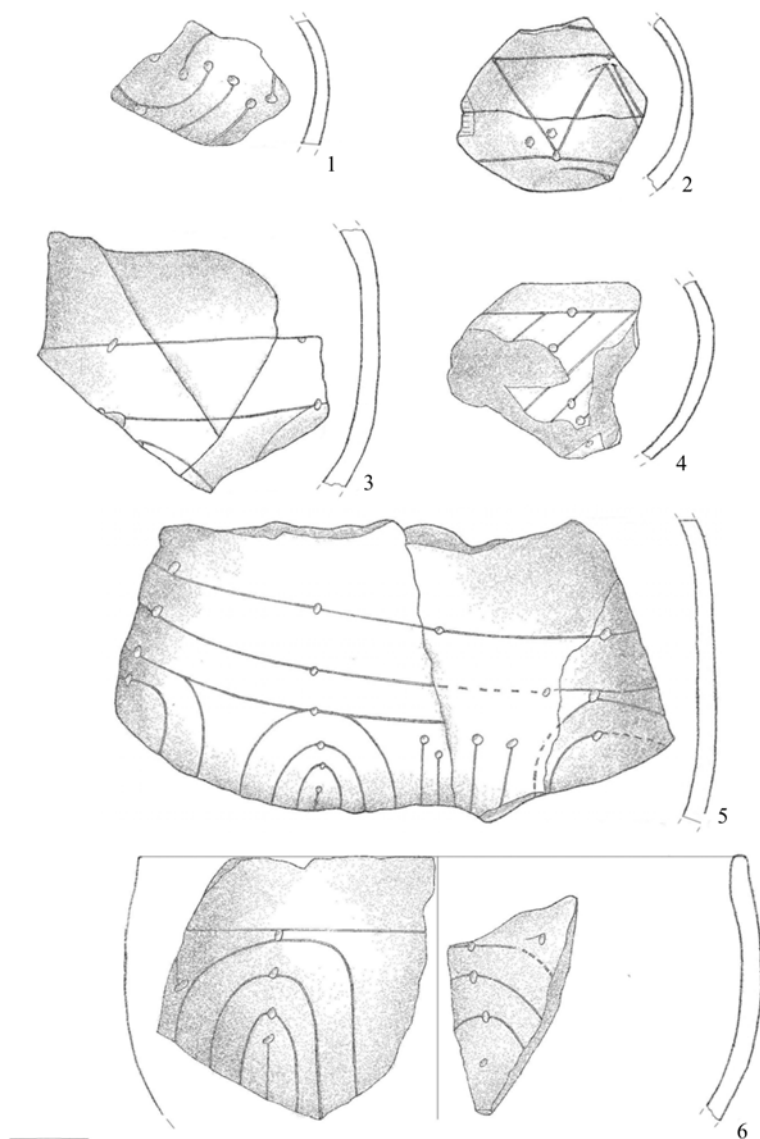
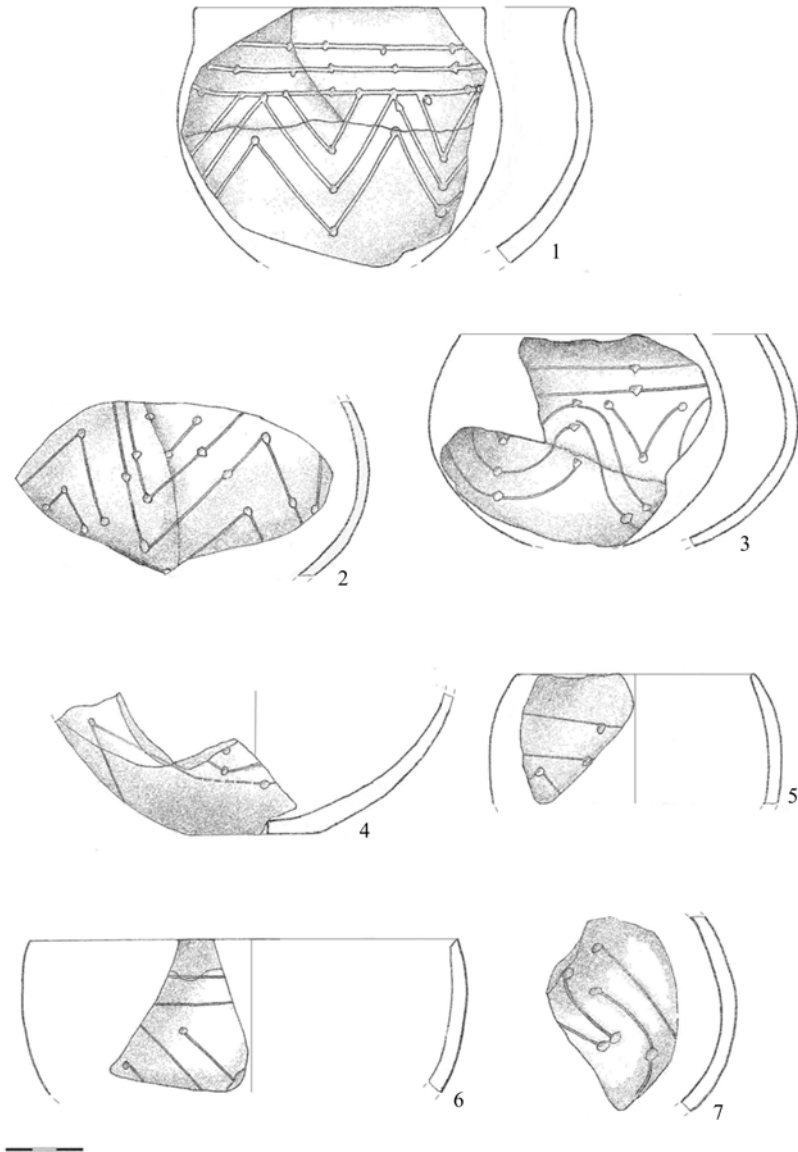


Fig. 16. Isaiia – *Balta Popii*. Fine ware



**Fig. 17.** Isaiia – *Balta Popii*. Fine ware; 1, 2, 4 from the foundation trenches of the house features 8/8A

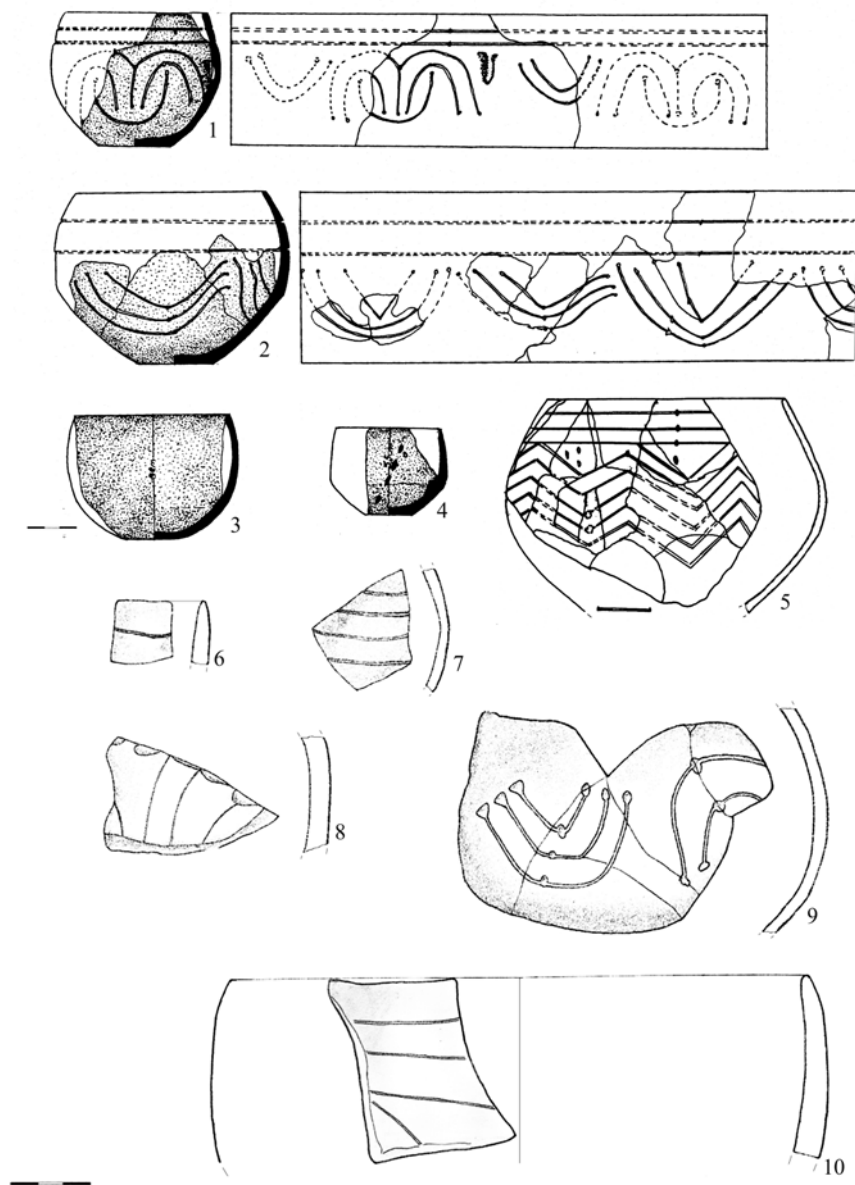
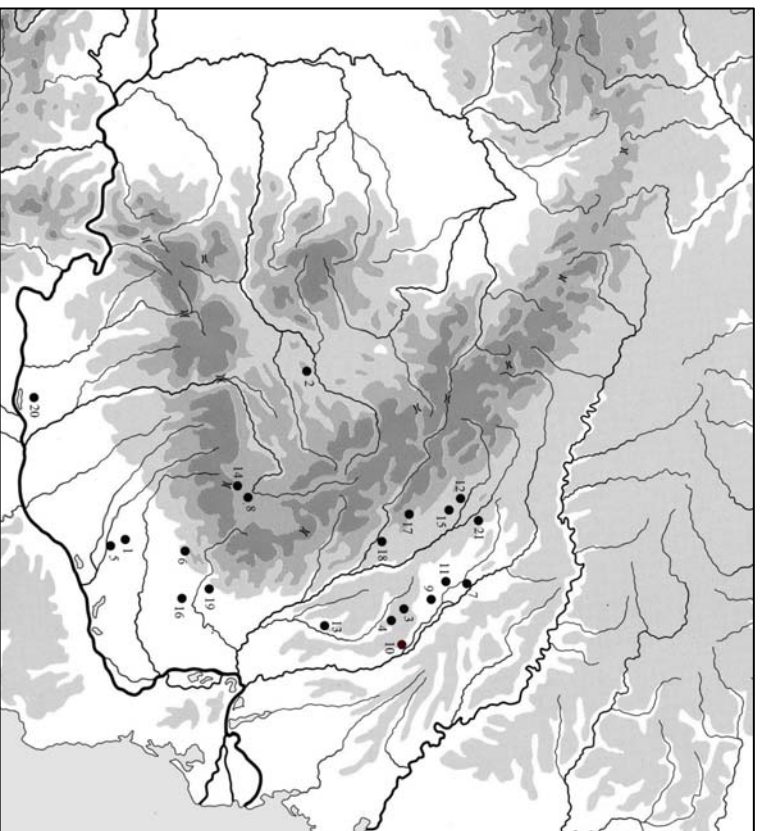
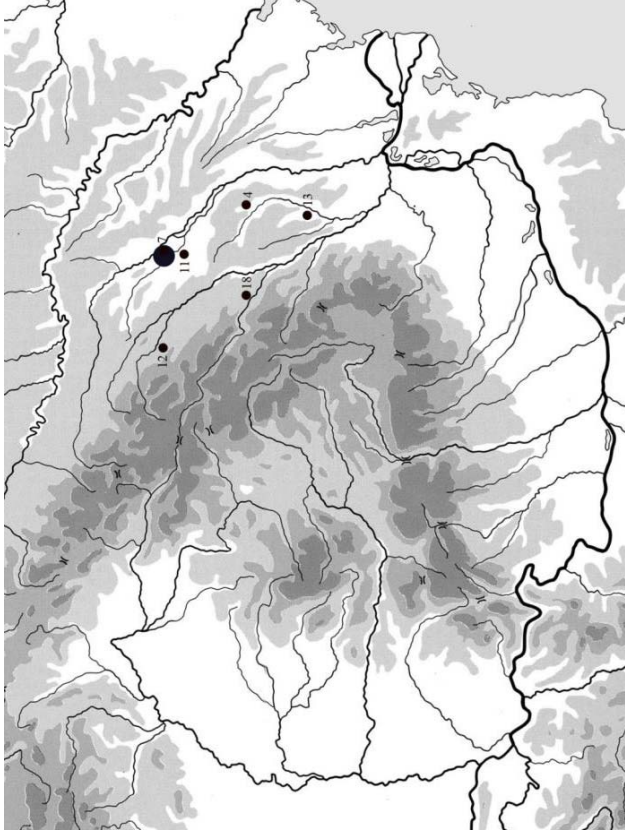


Fig. 18. Isaiia – *Balta Popii*. Fine ware; 1-7 from the house feature 4



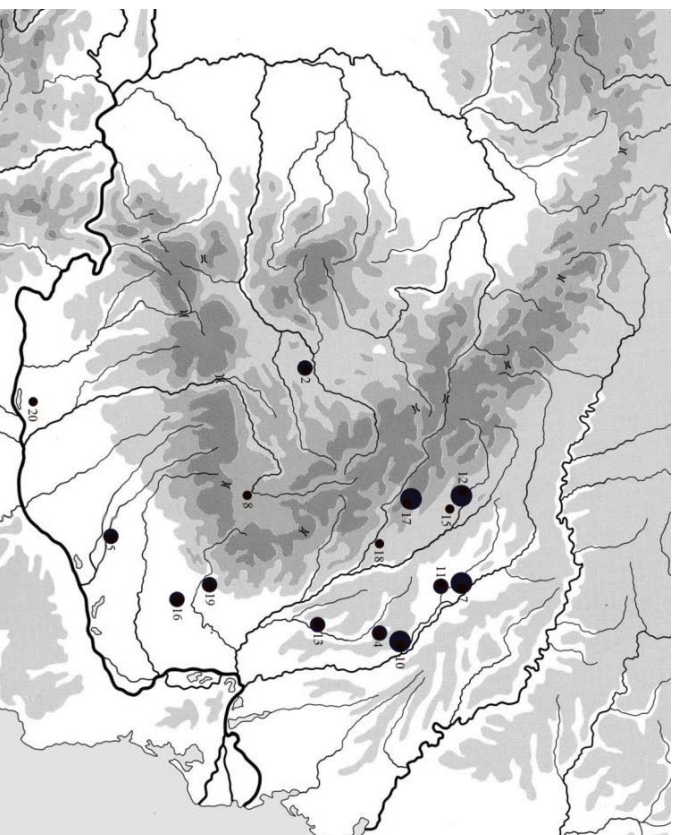
**Map I.** Sites of the Music-note Linear Pottery culture in Romania: 1. Cernica; 2. Cîpău-Gară, Cîpău-ICI.A.; 3. Ciurea; 4. Dănești; 5. Dudești; 6. Ghinoaia; 7. Glăvăneștii Vechi; 8. Harman; 9. Iași; 10. Isalia; 11. Larga Jijia; 12. Mihoveni; 13. Perieni; 14. Rupea; 15. Șcheia-Siliște; 16. Sudriți; 17. Târpești; 18. Traian; 19. Vadu Sorești; 20. Vădastra; 21. Vâlcelele-Găureanca



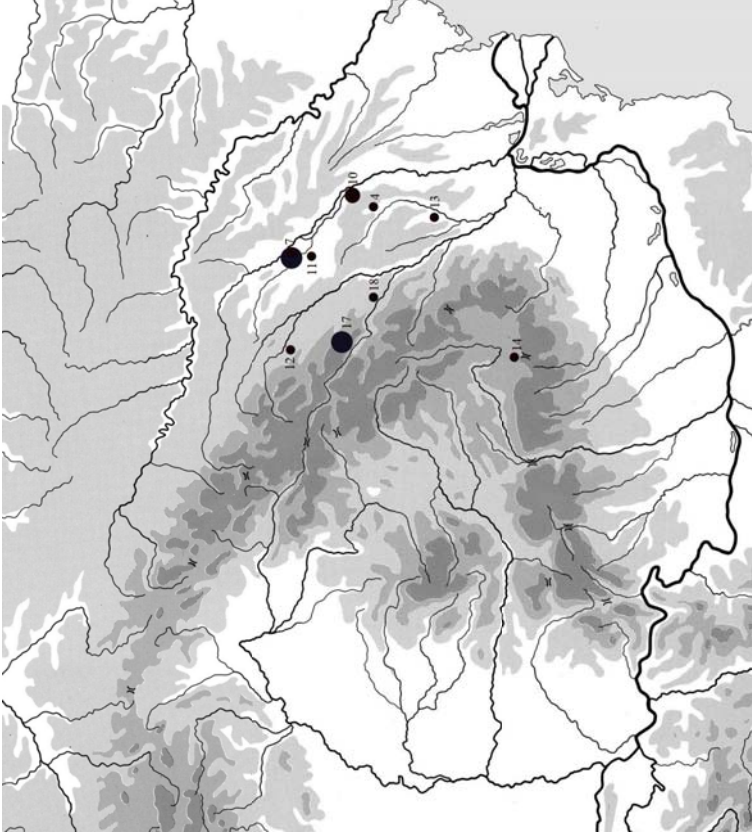
**Map II.** Music-note Linear Pottery sites in Romania (for site numbers see map I): Early phase

Number of significant sherds (applies also to map III and IV):

- 1-2 sherds
- 3-6 sherds
- more than 6 sherds



**Map III.** Music-note Linear Pottery sites in Romania (for site numbers see map I): Middle phase



**Map IV.** Music-note Linear Pottery sites in Romania (for site numbers see map I): Late phase



Southwestern Slovakia		Moravia	Southeastern Poland	Ukraine	<b>Romania</b>
Želiezove-group	Early phase	IIc	II	III	<b>III</b>
Younger Linear Pottery culture	Late phase	IIb	I,3	II	<b>II</b>
	Middle phase	IIa <sub>2</sub>	I,2		
	Early phase	IIa <sub>1</sub>	I,1		
					<b>I</b> Starčevo-Criș

**Table 1.** The relative chronology of the Music-note Linear Pottery culture in southwestern Slovakia, Moravia, southeastern Poland, Ukraine and Romania (J. Braungart)